

EN: Warnings

Don't drop, disassemble or attempt to repair the charger by yourself.
 Avoid exposure to water or high humidity.
 Don't expose to any heat source.
 Keep out of reach of children.
 Don't use in the presence of flammable gas.

NL: Waarschuwing

Probeer de lader niet zelf te repareren of te demonteren.
 Vermijd blootstelling aan water of een hoge luchtvochtigheid.
 Niet blootstellen aan een warmtebron.
 Buiten bereik van kinderen houden.
 Niet gebruiken in de aanwezigheid van brandbaar gas.

DE: Achtung

Versuchen Sie nicht, den Solar Lader selbst zu reparieren.
 (Garantieverlust)
 Vermeiden Sie hohe Luftfeuchtigkeit oder Kontakt mit Wasser
 Verwenden Sie das Gerät nicht in der Nähe von brennbaren Gasen oder Flüssigkeiten
 Halten Sie das Gerät fern von Hitzequellen.
 Ausser Reichweite von Kindern halten.

FR: Attention

Ne pas faire tomber ou démonter ou tenter de réparer le produit soi-même.
 Ne pas exposer le produit à l'eau ou dans un endroit trop humide.
 Ne pas poser le chargeur solaire près d'une source de chaleur.
 Tenir hors de portée des enfants
 Ne pas utiliser en présence de gaz inflammables

IT: ATTENZIONE

Non usare vicino ad una fiamma.
 Non esporre vicino a fonti di calore elevato
 Non modificare la struttura o disassemblare
 Smettere di utilizzare immediatamente nel caso si sentano odori strani, calore, o strani rumori provenire dallo stesso.
 Non lasciar giocare i bambini.
 Usare solo in luoghi asciutti.
 Riciclare l'apparato secondo le norme vigenti nella nazione di utilizzo.

CZ: UPOZORNENÍ

Neupustte, nerozebírejte, ani se nepokoušejte spravit nabíječku sami.
 Vyvarujte se působení vody nebo vysoké vlhkosti.
 Nevystavujte tepelným zdrojům.
 Uchovávejte mimo dosah dětí.
 Nepoužívejte v blízkosti hořlavých plynů.

SK: Upozornenia

Neupustite, nerozoberajte, ani sa nepokúšajte opraviť nabíjačku sami.
 Vyvarujte sa pôsobeniu vody alebo vysokej vlhkosti.
 Nevystavujte tepelným zdrojom.
 Uchovávajte mimo dosahu detí.
 Nepoužívajte v blízkosti hoľavých plynov

SE: varning

Tappa inte, ta inte isär eller försök reparera laddaren själv
 Utsätt inte för vatten eller hög fuktighet
 Utsätt inte för värme.
 Förvaras utom räckhåll för barn.
 Använd ej i närheten av lättantändlig gas.

ES: Atención

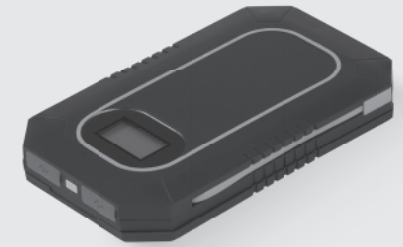
No dejar caer el producto.
 No desmontarlo ni intentar repararlo, por sus propios medios.
 Evitar el contacto con el agua o fuente de humedad.
 No exponer la alimentación a una fuente de calor.
 Mantenga fuera del alcance de los niños.
 No utilizar en presencia de fuentes o gas infl amables

*** THIS MANUAL IS AVAILABLE IN DIFFERENT LANGUAGES ON OUR WEBSITE**

Hoofdveste 19
 3992 DH Houten
 The Netherlands
 T: + 31 (0) 30 635 4800
 F: + 31 (0) 30 635 4801
 www.a-solar.eu



Portable Power Charger Solar/USB AM-114 Lava Charger 4.000mAh



EN: Thank you for purchasing our product

NL: Dank u voor de aankoop van ons product

DE: Vielen Dank, dass Sie sich für unser Produkt entschieden haben

FR: Merci d'avoir acheté notre produit

IT: Grazie per aver acquistato questo prodotto

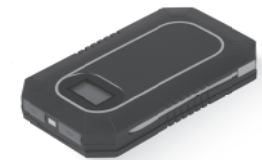
CZ: Děkujeme vám za zakoupení tohoto výrobku

SK: Ďakujeme vám za zakúpenie tohto výrobku

SE: Tack för att du köpt vlr produkt

ES: Gracias por comprar nuestro producto

Box contains



PORTABLE POWER CHARGER

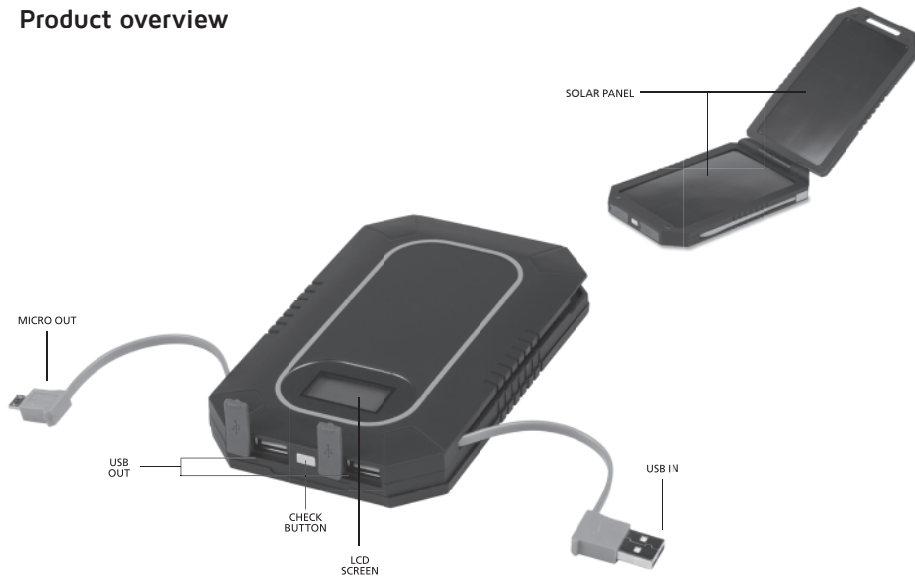


MICRO USB CABLE

Specifications:

Dimensions product (hwxwd)	92x152x20mm
Weight product	186 grams
Internal battery	4000mAh
Solar panel	3,5 Watt
Input	5V/1A
Output	1A & 2,1A
Charging time Sunlight	7-9 hours*
Charging time USB	5-10 hours*
Charging time Mobile equipment	3-4 hours*
LED battery indication	Yes
Internal USB output	Yes

1. Product overview



2. QUICK START / Use

PRE CHARGED

All Xtorm chargers come pre-charged out of the box! This means that you can instantly start charging your mobile devices without first having to charge your Xtorm back-up battery!

OPTION A



FOR IPHONE/PAD USE OWN USB CHARGING CABLE.

OPTION B



MICRO OUT *USE FOR MOST NEW SMARTPHONE MODELS*

Connect the USB cable using the micro USB connector with USB IN

Expect 3-4 hours* charging time

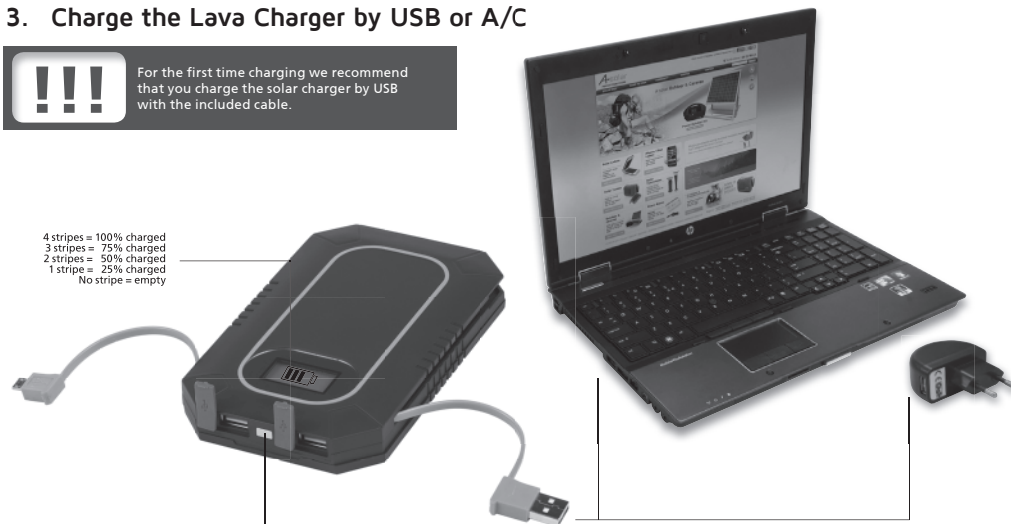
Connect the USB cable with USB Out

3. Charge the Lava Charger by USB or A/C



For the first time charging we recommend that you charge the solar charger by USB with the included cable.

4 stripes = 100% charged
3 stripes = 75% charged
2 stripes = 50% charged
1 stripe = 25% charged
No stripe = empty



Press the BUTTON and the LEDs indicate how far the charger is charging
Expect 5-10 hours* charging time

METHOD 1:
Connect the USB cable with the USB Port or with your PC/laptop.

METHOD 2:
Connect the USB cable with your A/C adapter
Not included

4. Charge the Lava Charger by sunlight

Best illumination angle



Best place to charge outside the house



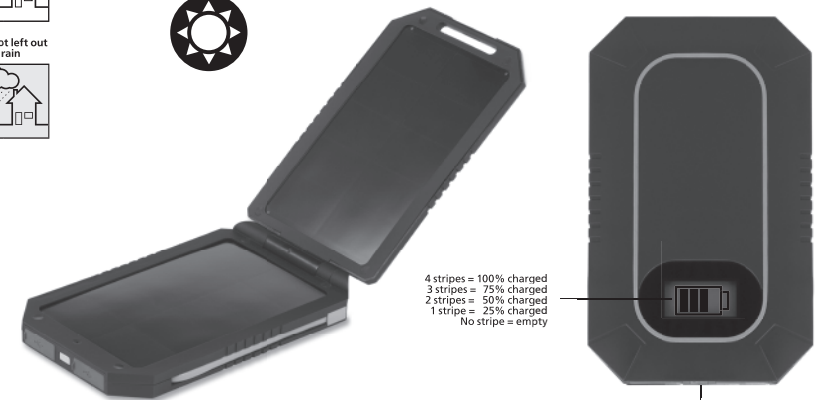
Best time of the day



Do not left out in de rain



Best degree of cloudiness



4 stripes = 100% charged
3 stripes = 75% charged
2 stripes = 50% charged
1 stripe = 25% charged
No stripe = empty

Please notice the following tips for optimum conditions

Place the Charger in direct sunlight and the battery is charged automatically

Expect 7-9 hours* charging time

Press the CHECK BUTTON and the LEDs indicate how far the charger is charging